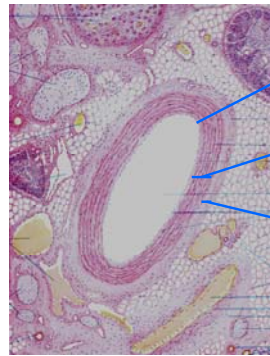


Cardiovascular System

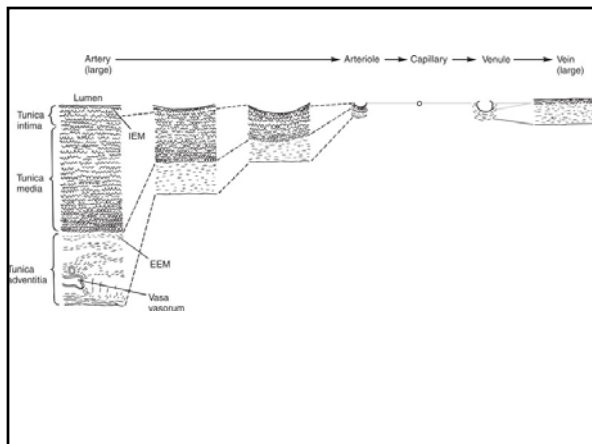


Air \neq O₂

O₂ 21%
 N 78%
 CO₂ 0.03%

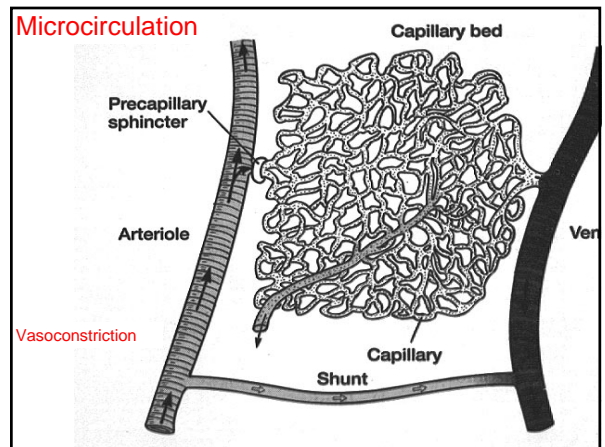
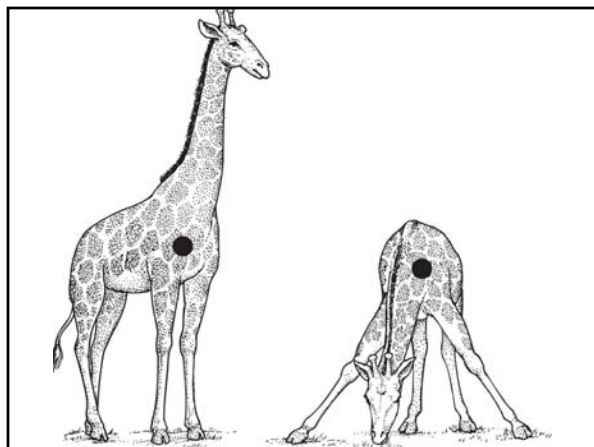
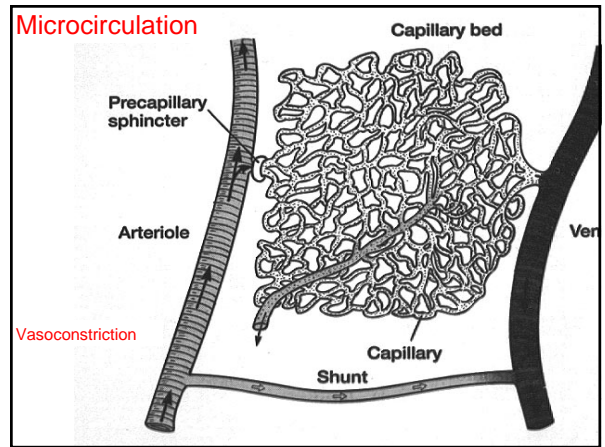
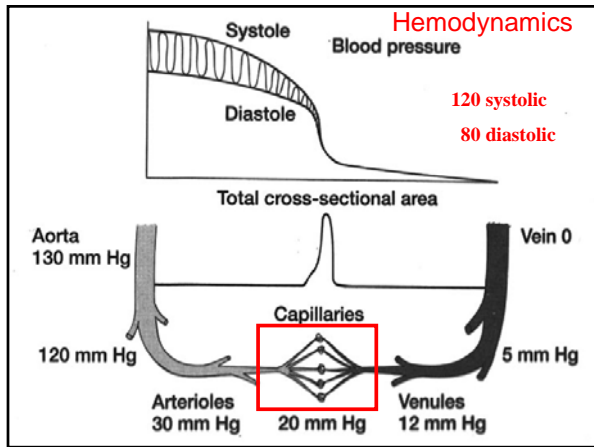
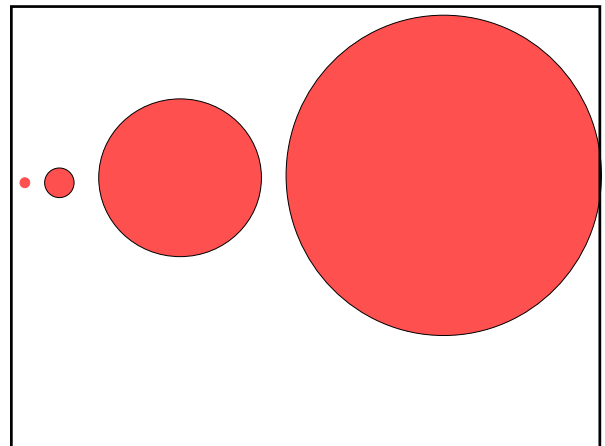
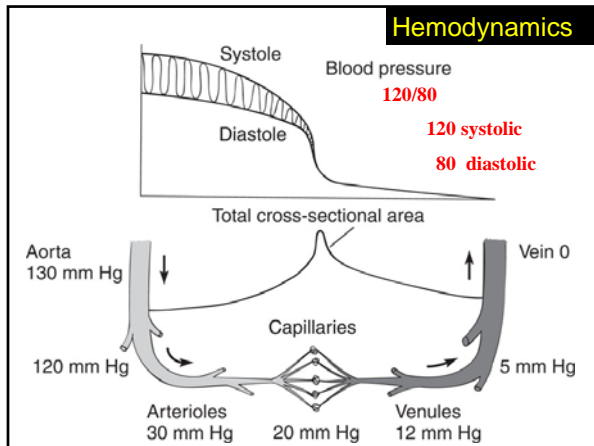


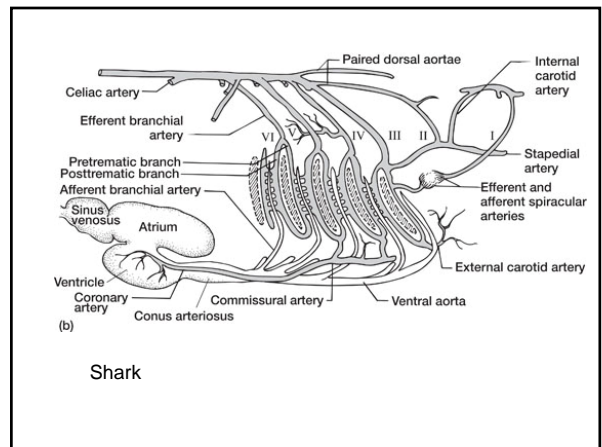
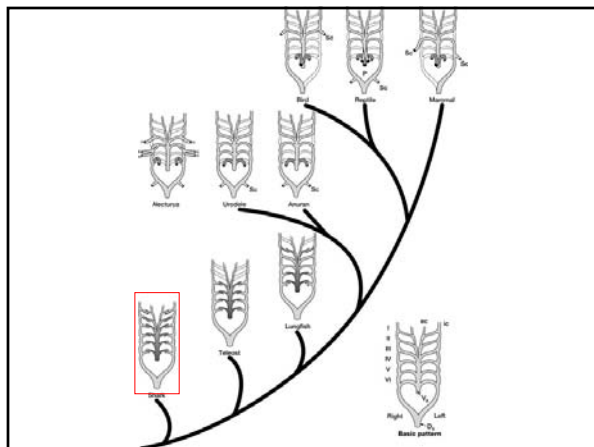
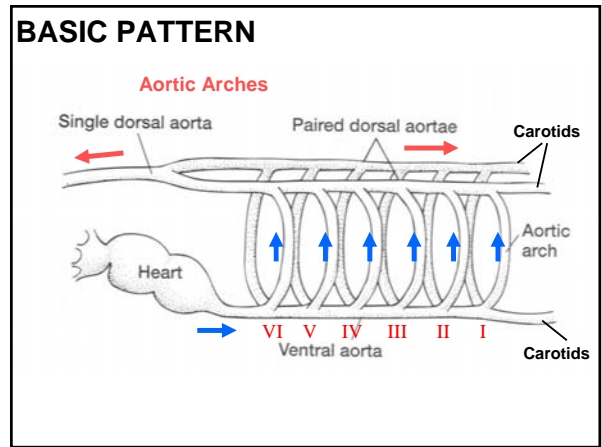
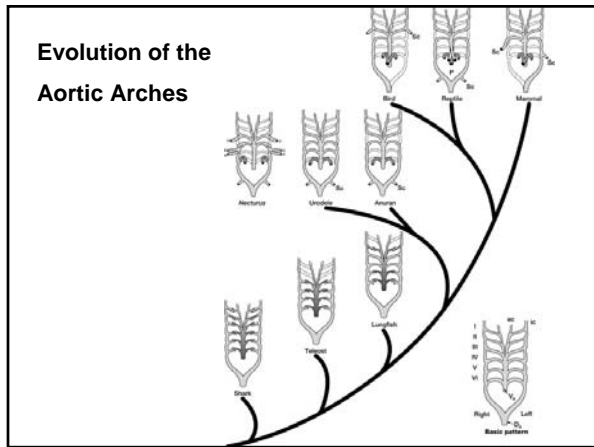
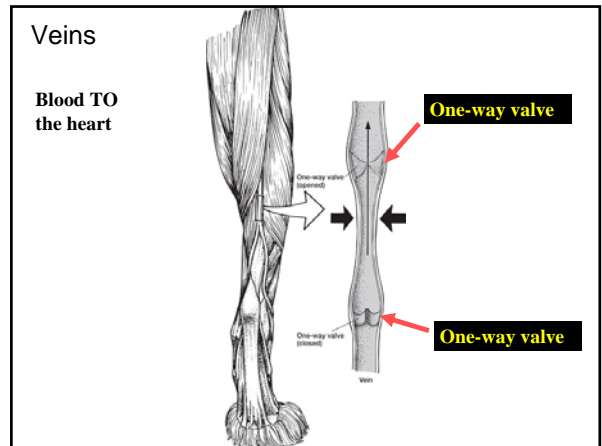
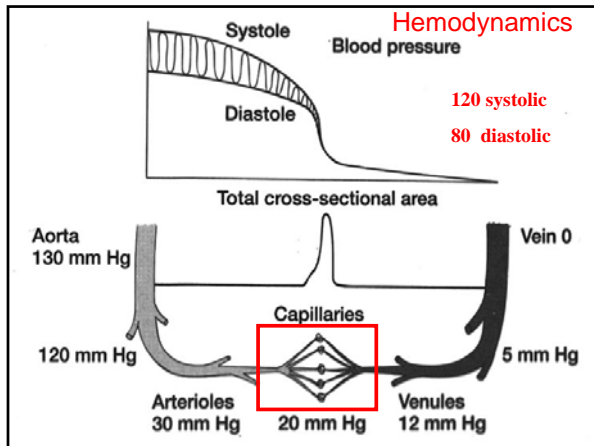
- tunica intima
 - endothelium
- tunica media
 - smooth muscle,
 - elastic fibers
- tunica adventitia
 - fibrous connective tissue

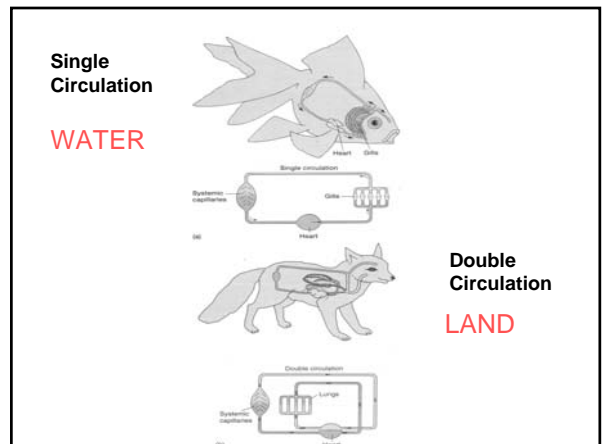
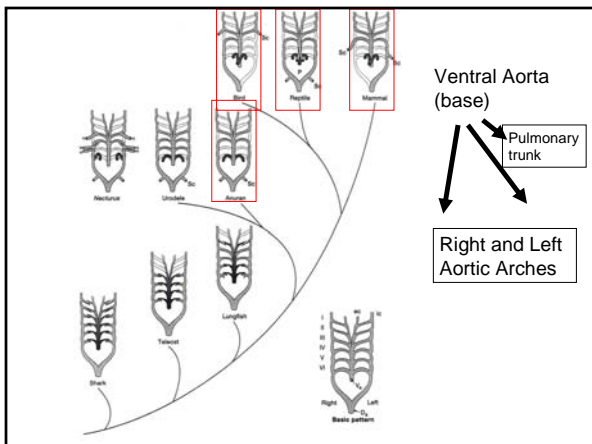
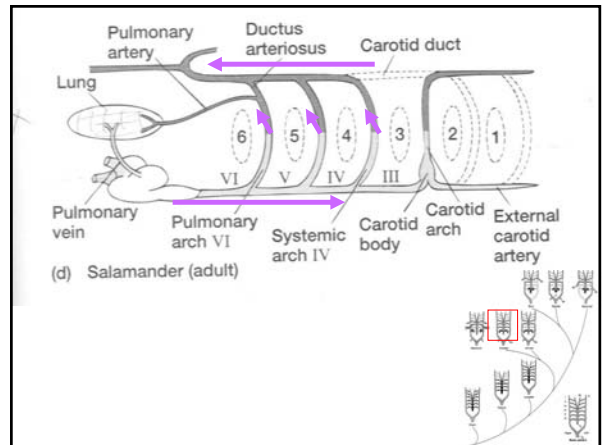
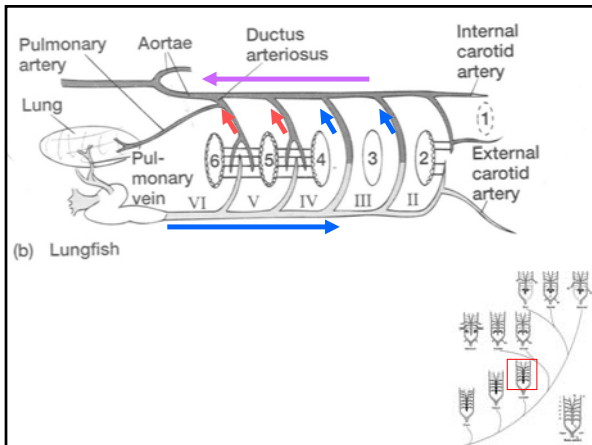
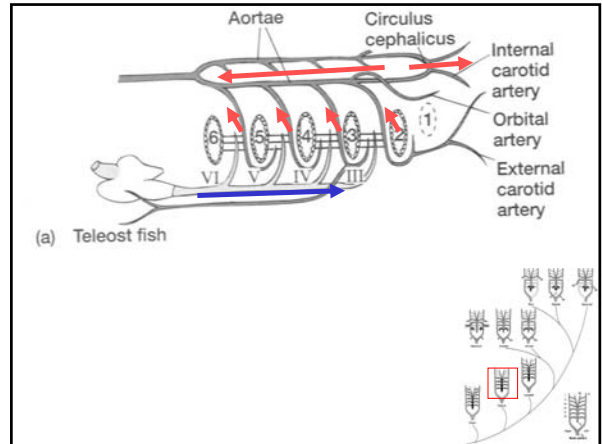
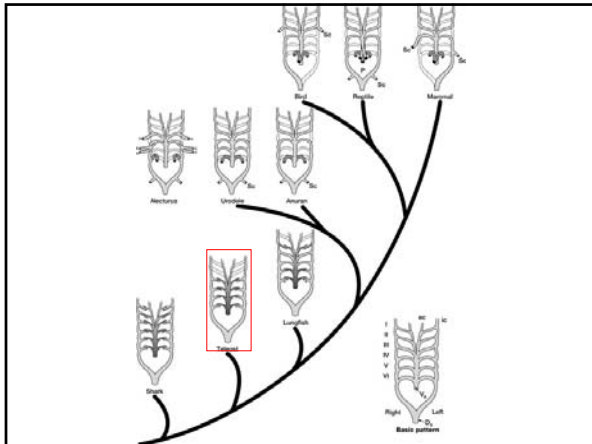


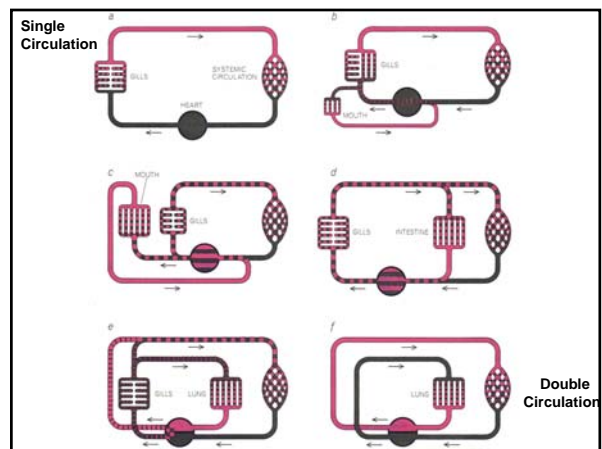
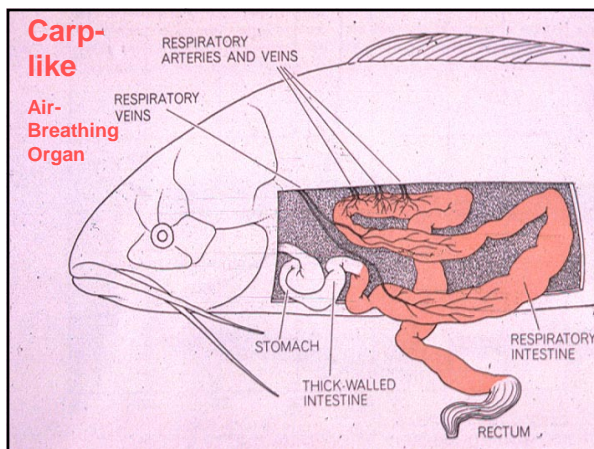
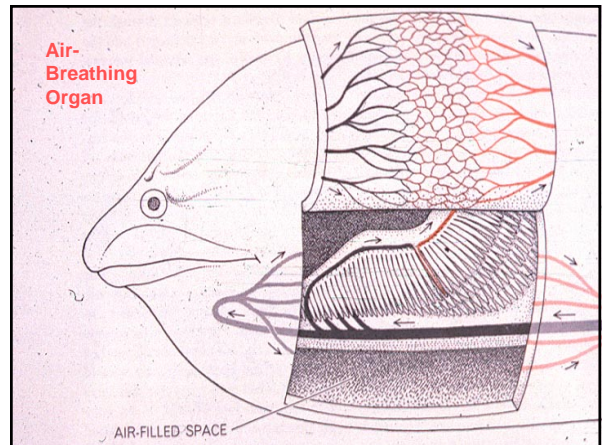
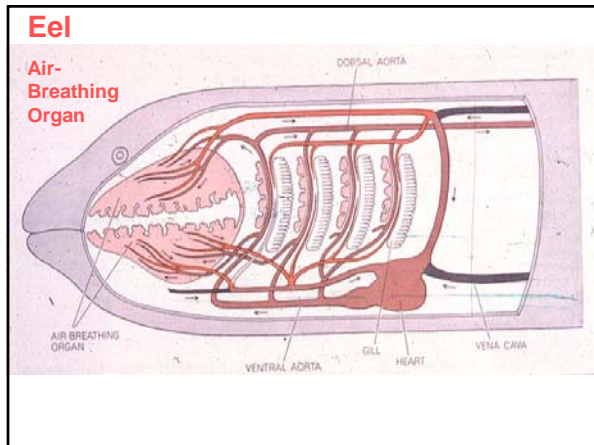
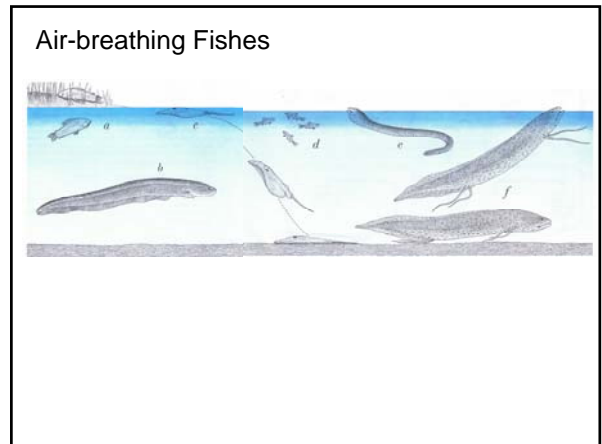
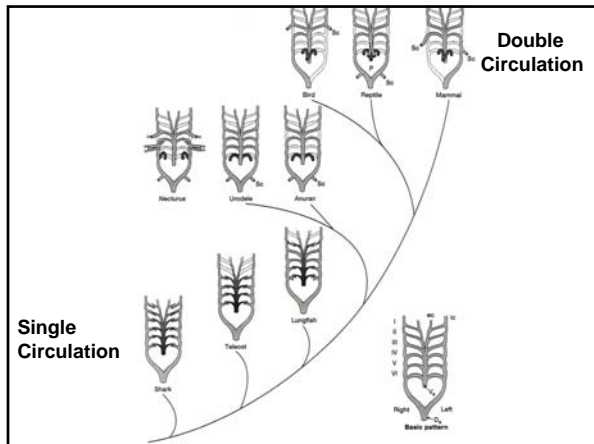
Arteries

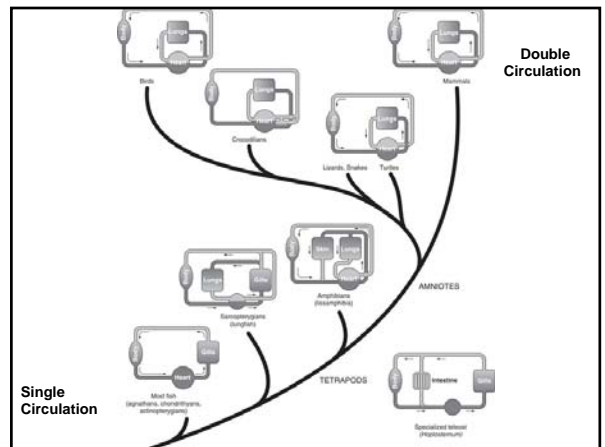
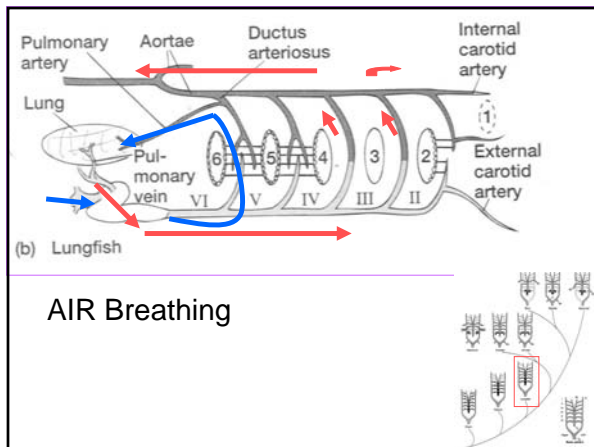
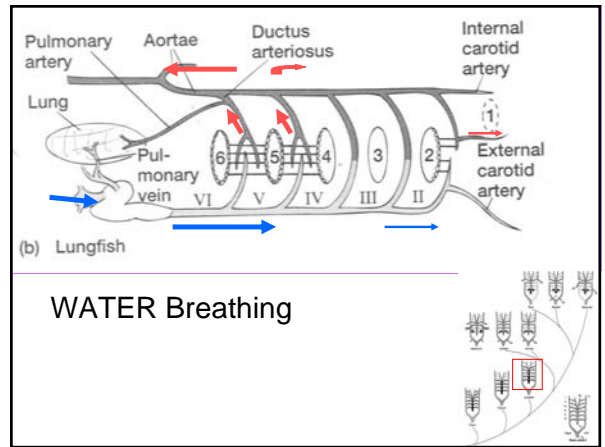
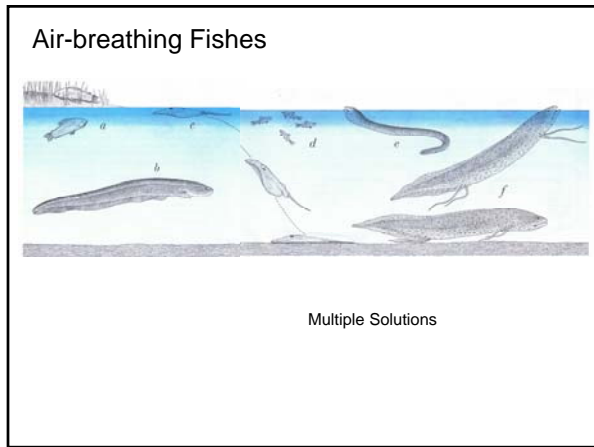
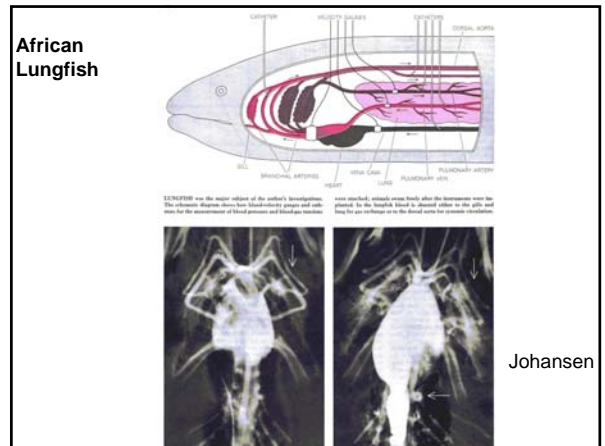
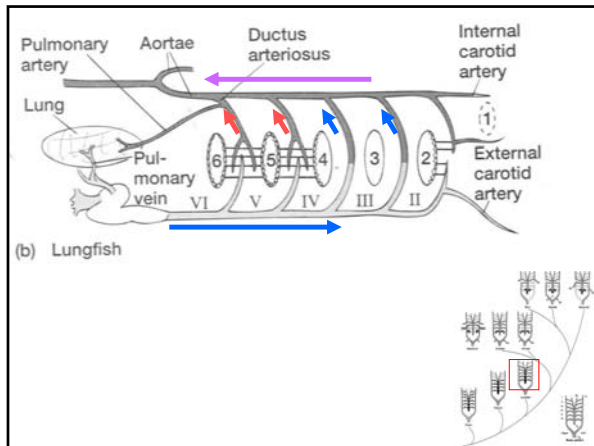
Blood AWAY from Heart
 Absorb and distribute force of ventricular contraction



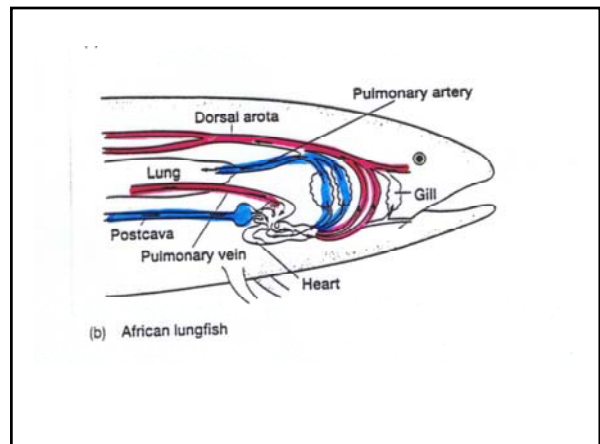
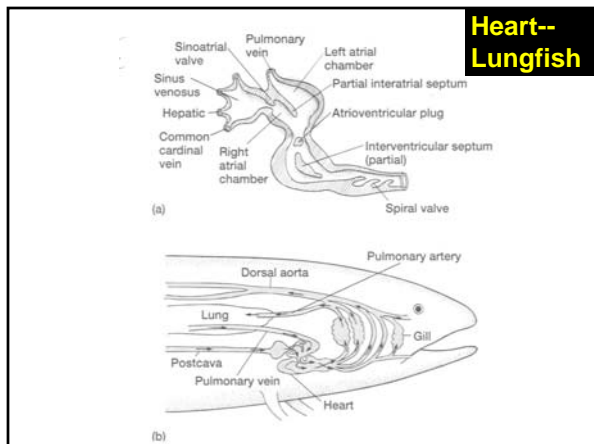
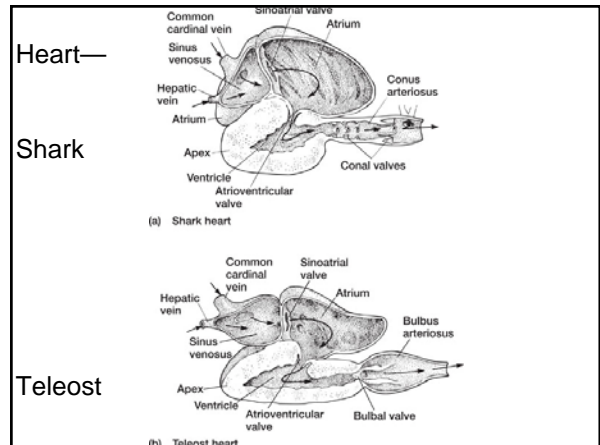
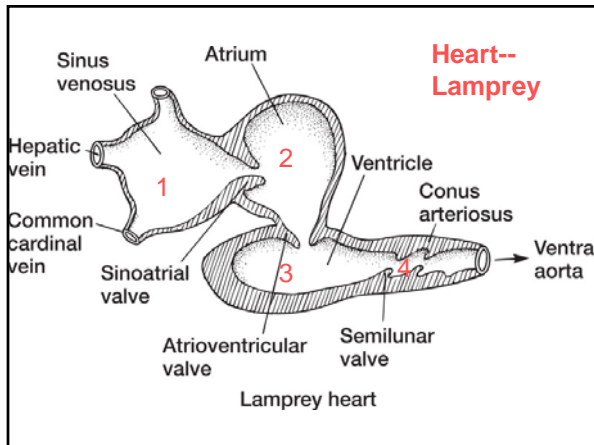
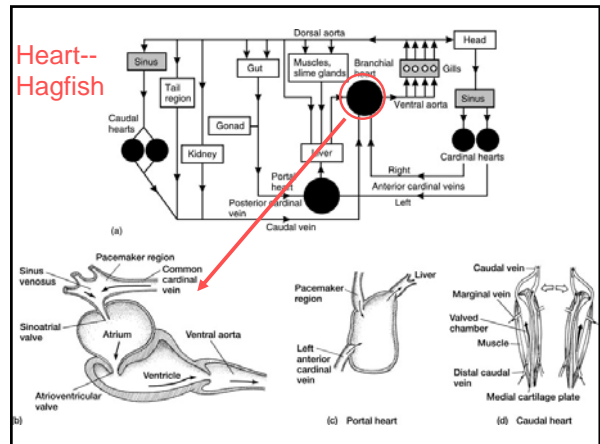


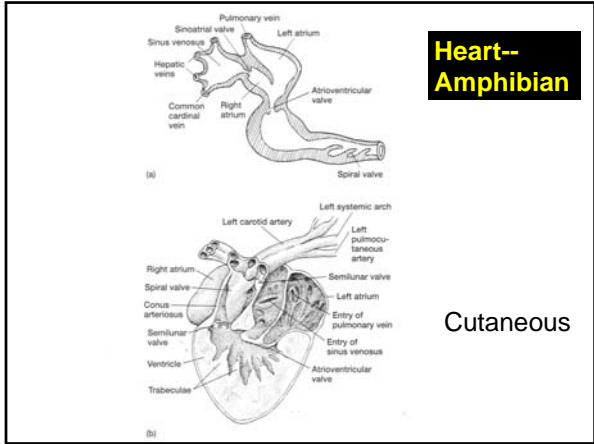






HEARTS





**Heart--
Amphibian**

Cutaneous