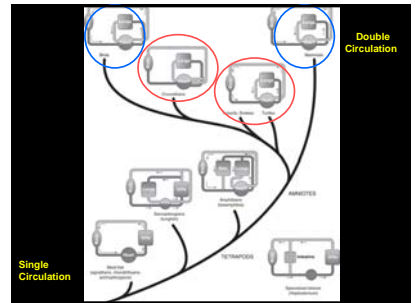
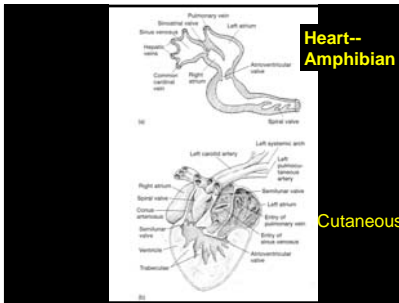
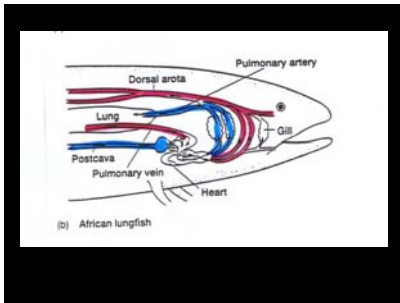
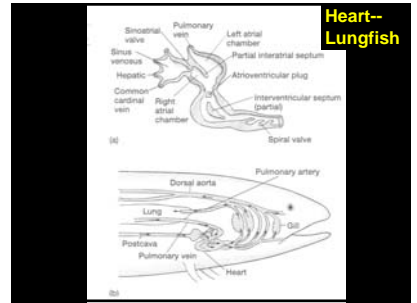
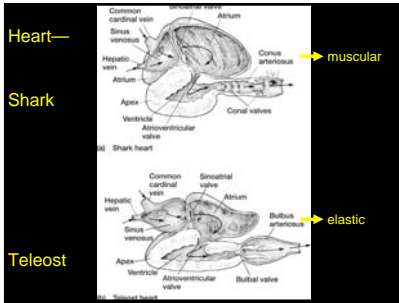
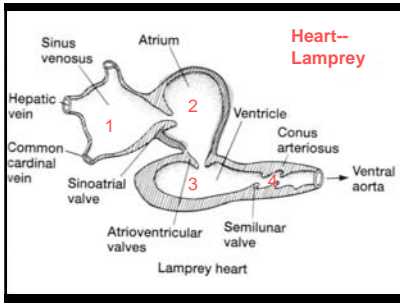
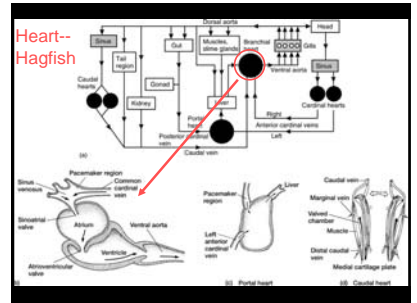
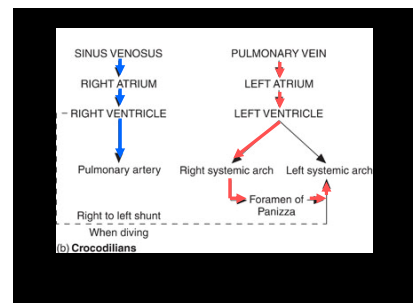
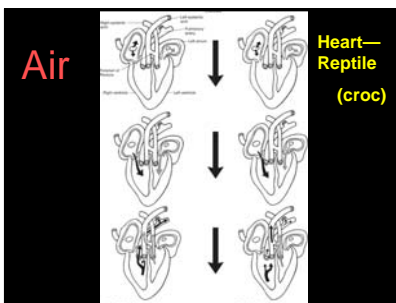
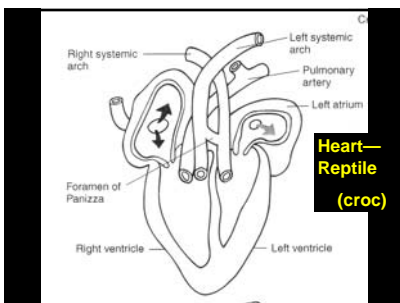
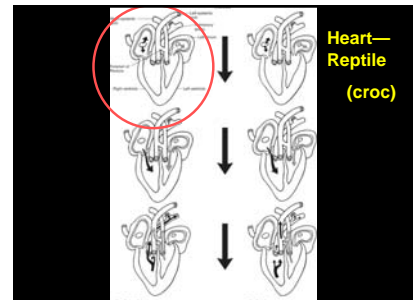
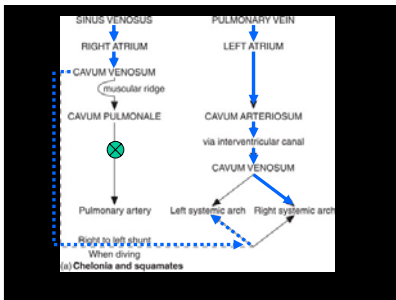
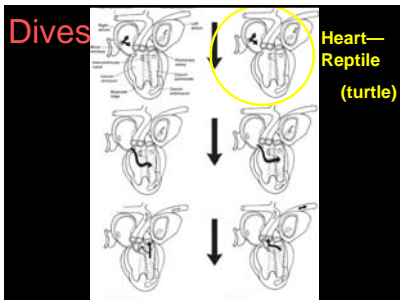
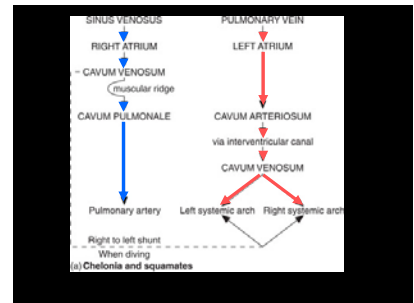
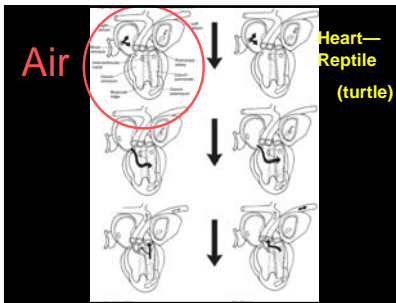
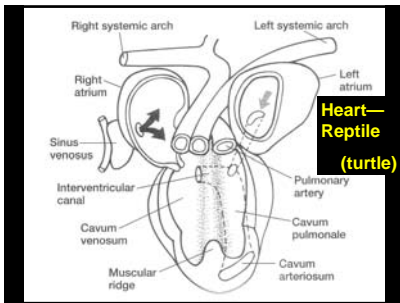


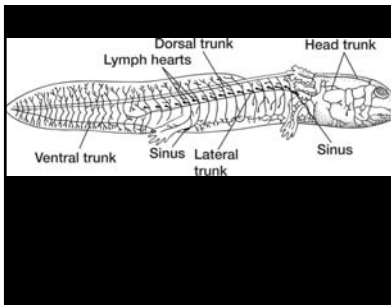
# HEARTS



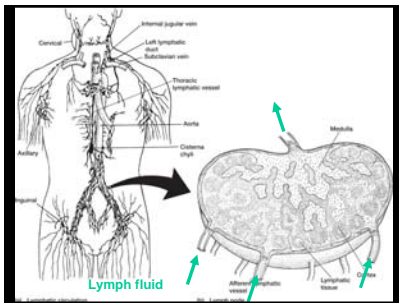




**Lymphatic Vessels**  
**one-way valves**  
**motive force**



**Lymphatic tissue**  
 1) white blood cells and  
 connective tissue  
 2) anywhere  
 3) lymph nodes



**Lymphatic System**

**Lymphatic vessels**  
 accessory venous system  
 absorption of fats (lacteals)

**Lymphatic tissue**  
 lymphocyte (WBC) production  
 filter  
 antibodies