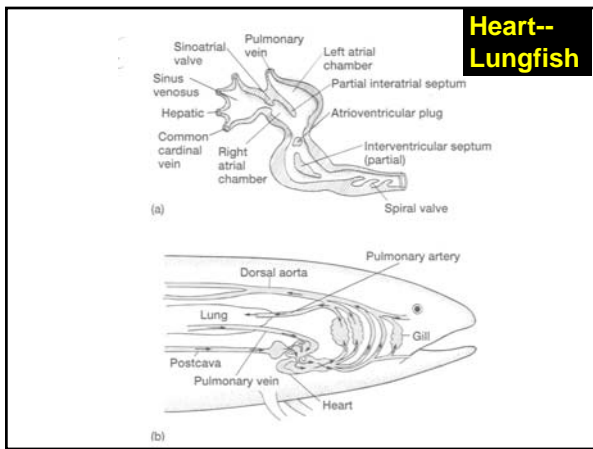
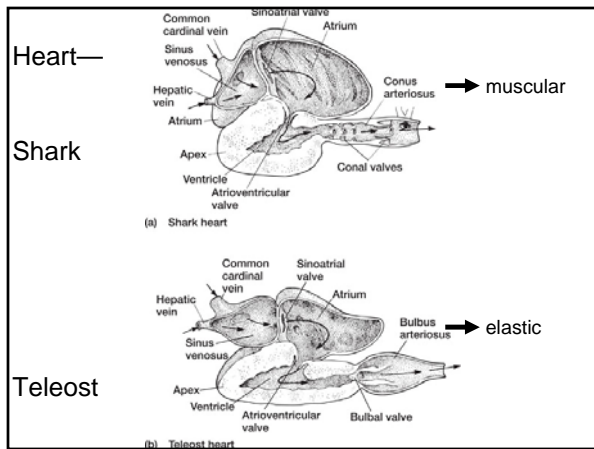
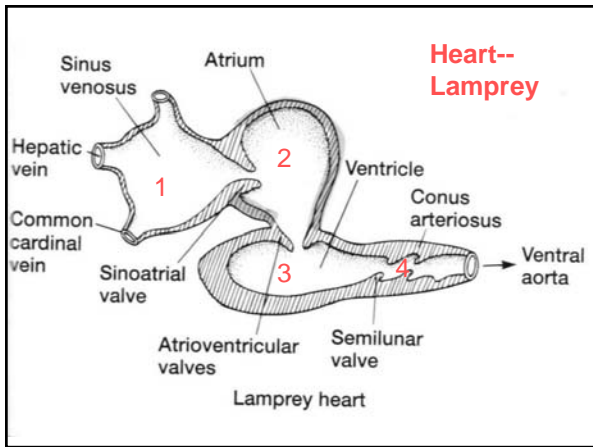
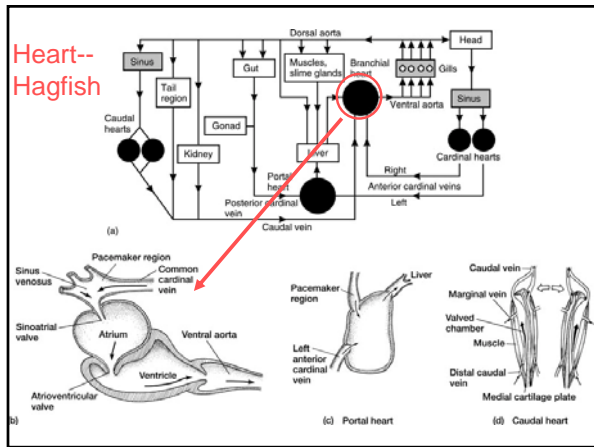
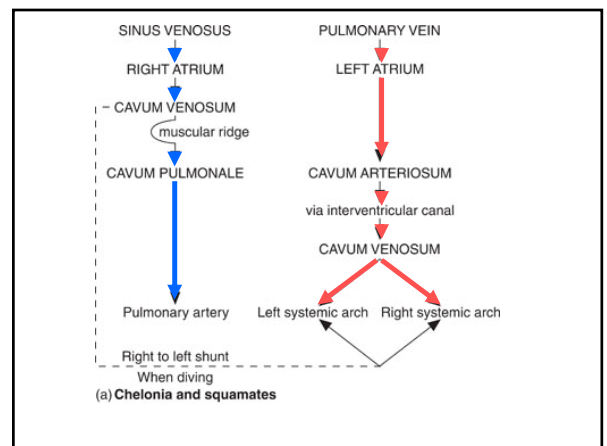
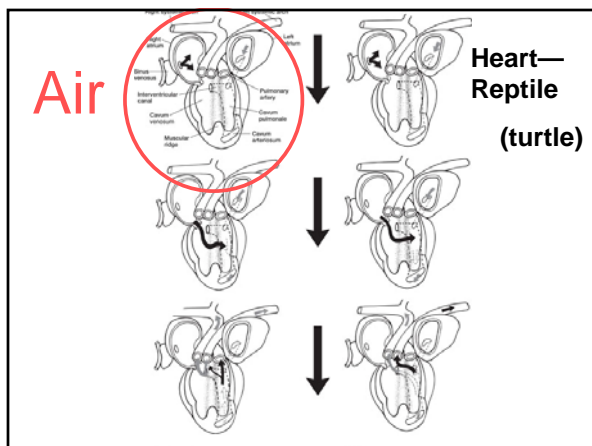
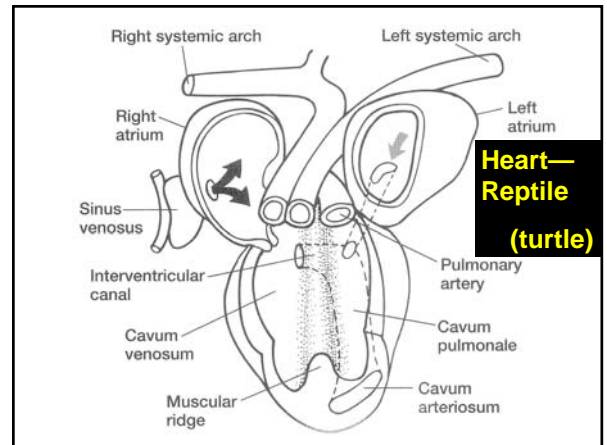
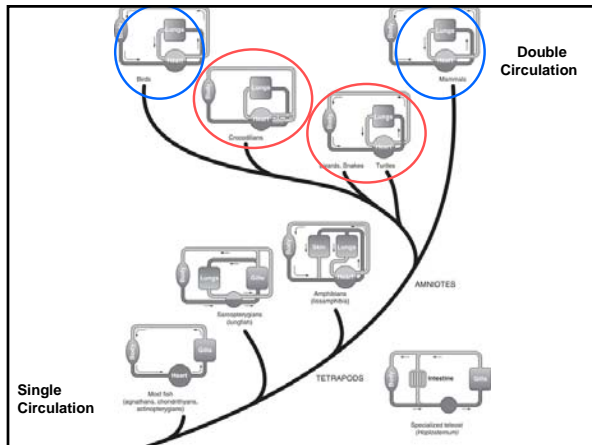
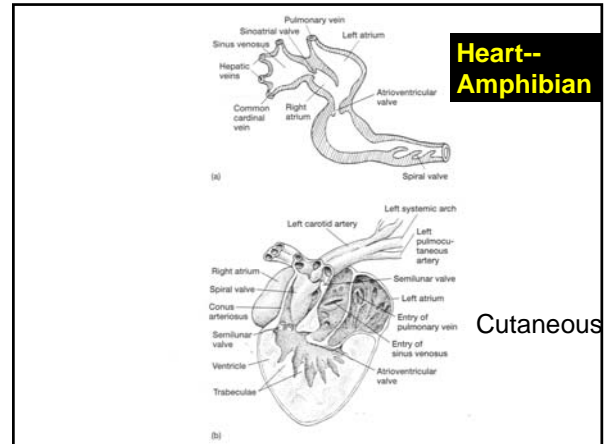
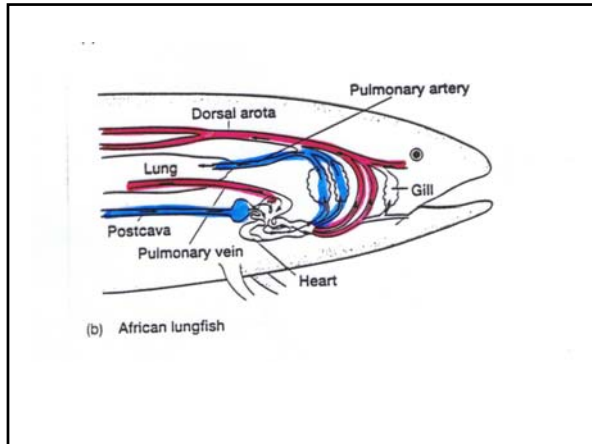
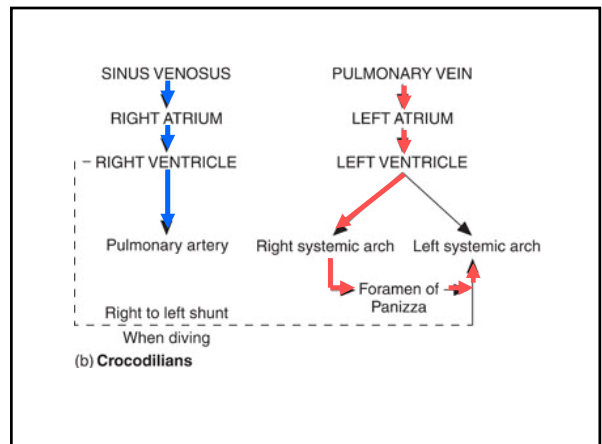
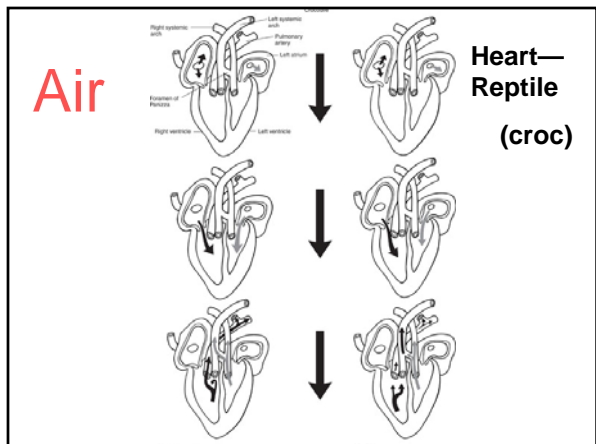
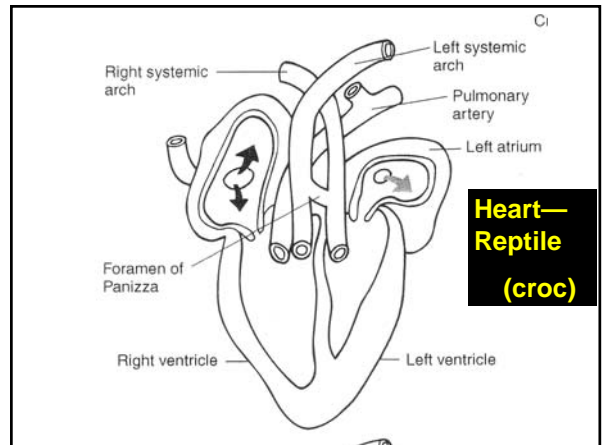
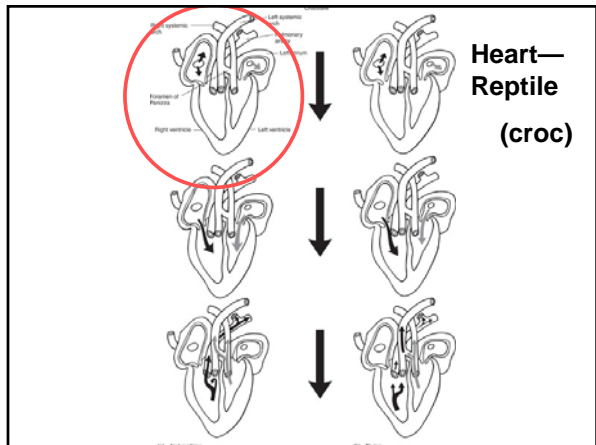
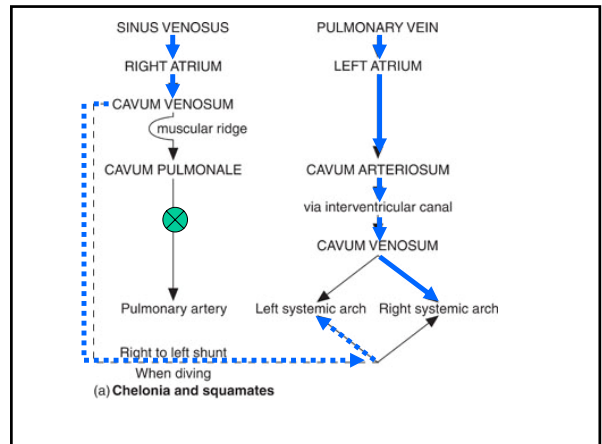
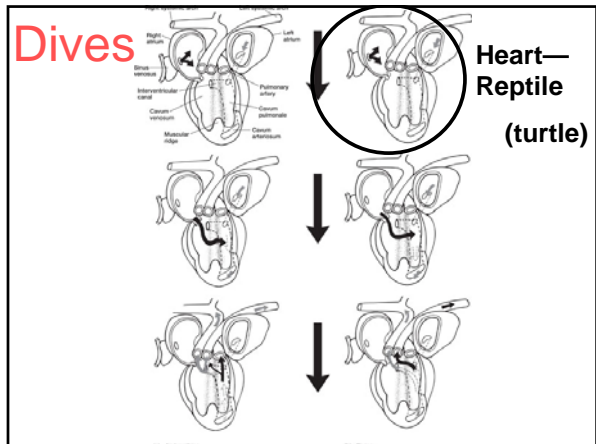
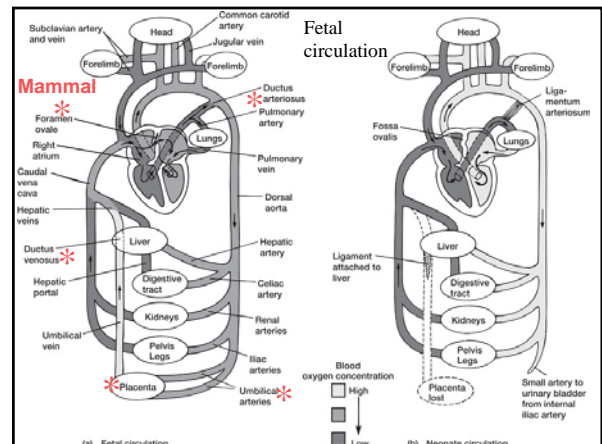
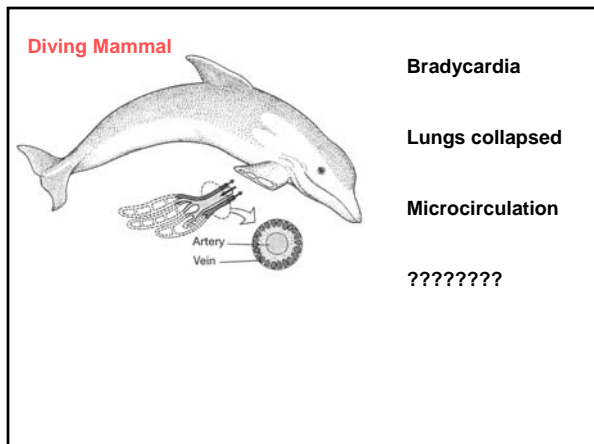
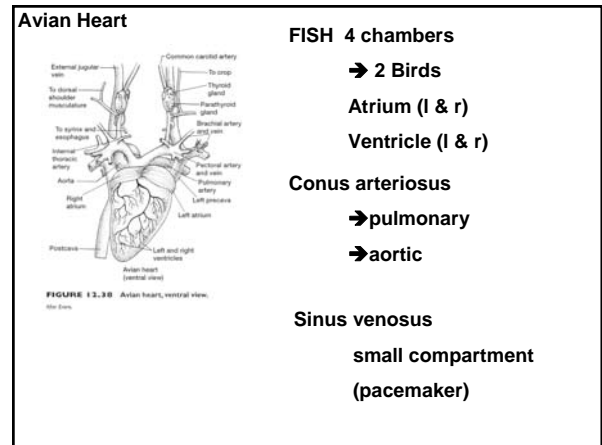
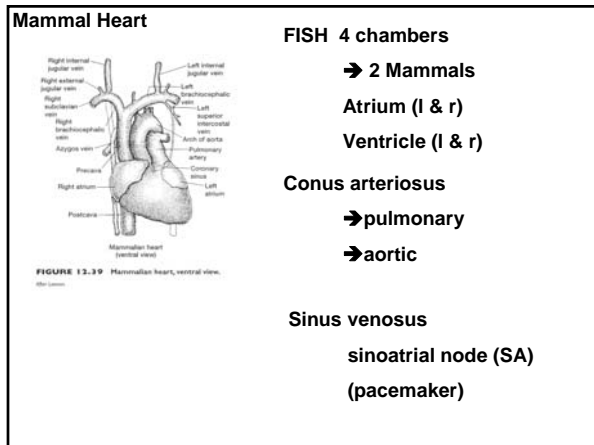
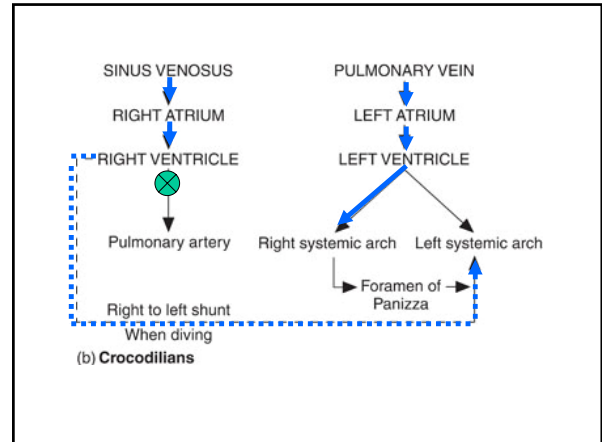
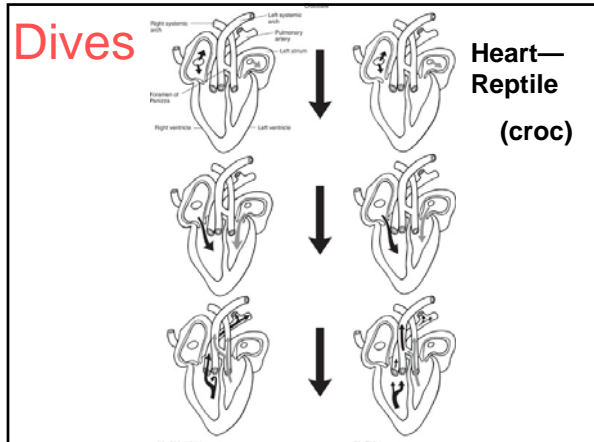


HEARTS



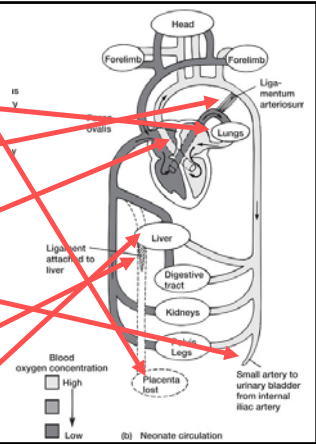






Mammal

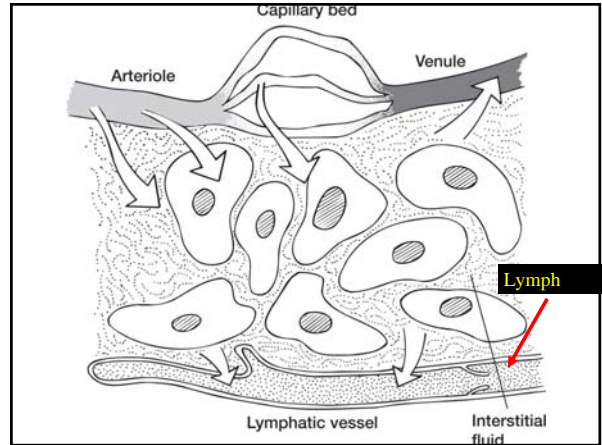
- 1) Placental circulation
- 2) Lungs expand
- 3) Ductus arteriosus > ligamentum arteriosum
- 4) Left atrium closure foramen ovale
- 5) Umbilical arteries > umbilical ligaments
- 6) Umbilical vein > ligamentum teres
- 7) Ductus venosus > ligamentum venosum



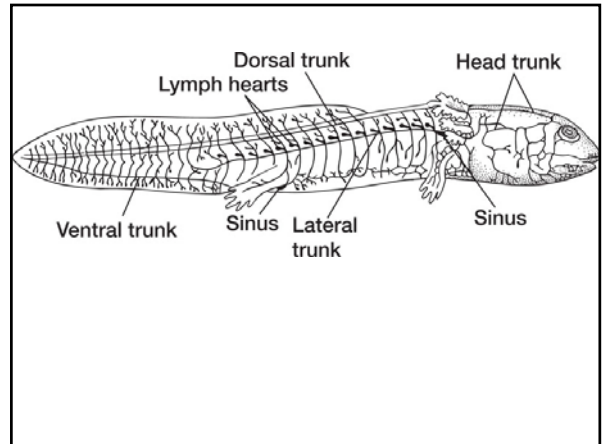
Cyanosis

Lymphatic System

- 1) Lymphatic Vessels
- 2) Lymphatic tissue

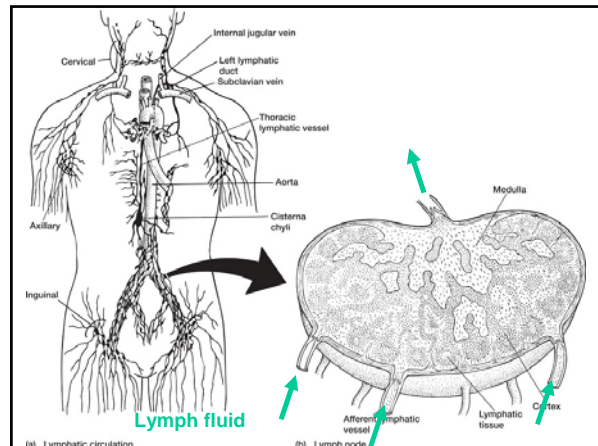


Lymphatic Vessels
one-way valves
motive force



Lymphatic tissue

- 1) white blood cells and connective tissue
- 2) anywhere
- 3) lymph nodes



Lymphatic System

Lymphatic vessels

- accessory venous system
- absorption of fats (lacteals)

Lymphatic tissue

- lymphocyte (WBC) production
- filter
- antibodies