

# Sperm Wars and Rape

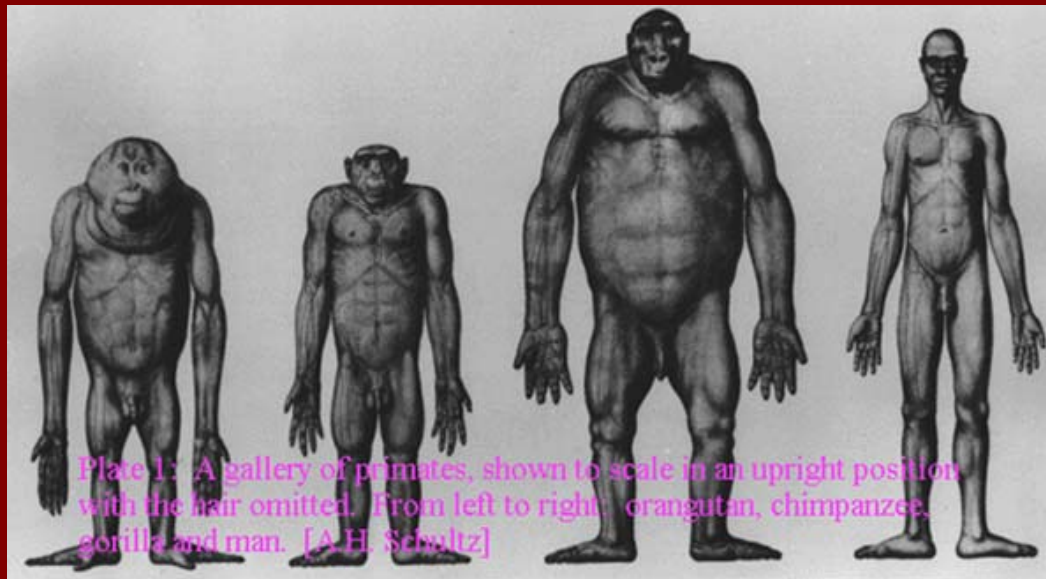
Lecture 9

7-6

# Males Adaptations for Short-term Mating Strategies

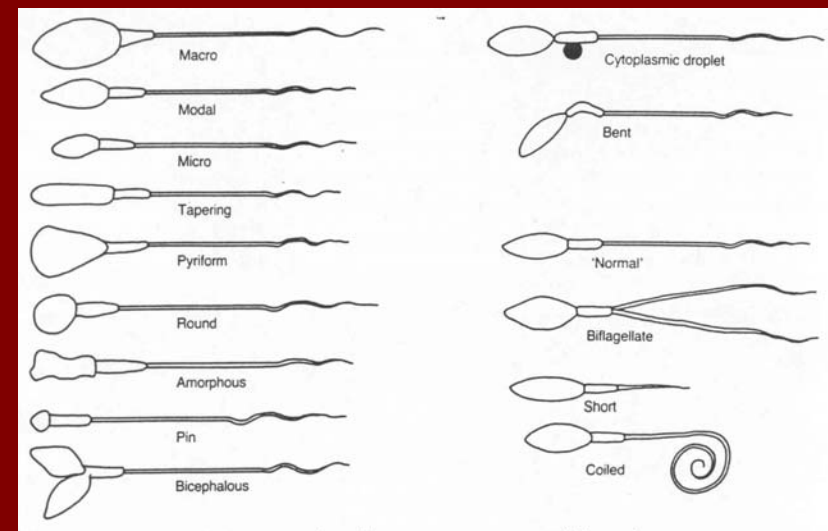
- Testes size: related to amount of competition between males sexual access to females
- Larger testes produce larger amounts of sperm
- Larger amounts of sperm = more competition

- Examples:
  - Gorillas**: high sexual dimorphism but small testes size, polygyny (1 male w/many females)
  - Chimps**: low sexual dimorphism but large testes size, polygamy (multiple matings of males and females)
  - Humans**: somewhere between chimps and gorillas
    - females were not monogamous in evolutionary past!!!



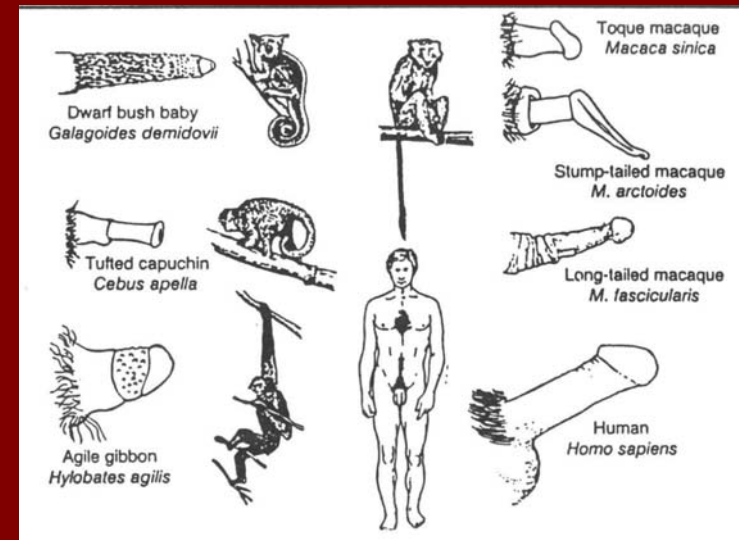
# Sperm Wars

- male sperm continues to compete with other male's sperm to fertilize egg
- 14 different types of sperm
- “Killer Sperm” destroy other sperm and have nothing to do with reproduction
  - Blockers- block and destroy other male sperm
  - egg getters- fertilize egg,



# Plugs and Penises: Why have so many?

- **cupulatory plugs:** material left by the male in female to seal in sperm or keep out other's sperm
- **Hard copulatory plugs:** rat example:
  - Penis shape thin, pointed, barbs removes plug
- **Soft copulatory plugs:** human example:
  - penis shape suction piston to remove plug
- **Short vs. long intercourse duration:** longer intercourse= more removal of soft plug



# Evolutionary Analysis of Psychological Pain Following Rape (Thornhill and Thornhill)

- Evolutionary Psychology: males who are unsuccessful in competition for resources and status may resort to forced sex.
- **Orangutan rape:** alpha male prevents beta males from mating with females, rape is the only way to pass on their genes.
- **Human rape:** there is not a good evolutionary explanation about why humans rape.
  - low and high status males rape.
  - lots of cultural components like power issues.

# Thornhill and Thornhill Hypothesis

- Psychological pain following rape is a way dealing with social circumstances that would have reduced inclusive fitness in our evolutionary history.
- Rape:
  - Can lead to injury.
  - Can reduce a woman's ability to choose the timing and circumstances for reproduction.
  - circumvents a woman's ability to use copulation as a means of securing a position for herself, children and relatives.
  - Of a pairbonded woman may adversely influence her mate's protection of her and or the quality and quantity of care she (her children) will receive.

- Women should feel more or less pain based on age and marital status.
- Results of Thornhills' study:
  - more psychological pain for women of reproductive age than others.
  - Reproductive age women felt rape would affect their future.
  - married victims of reproductive age felt more pain than non-married women of reproductive age.

# Conclusions

- Psychology regulates mental pain processing information about age and mateship status in the event of rape.
- Have the ability to control our mental pain to best serve our needs considering the situation.