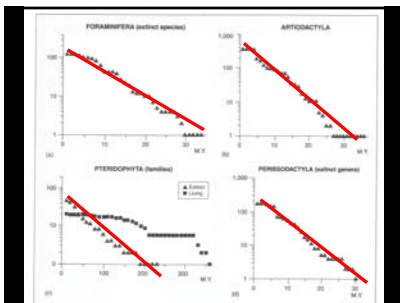
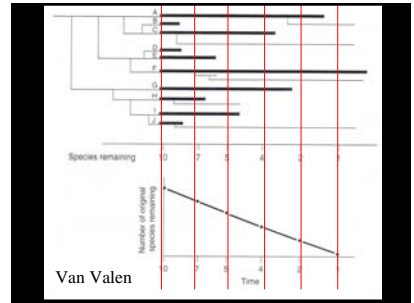


Islands ↓  
**Continents**  
 "big islands"  
 Rate Speciation → increase species  
 Extinction (loss species) ← Area continent

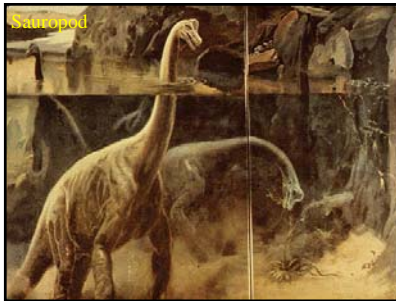
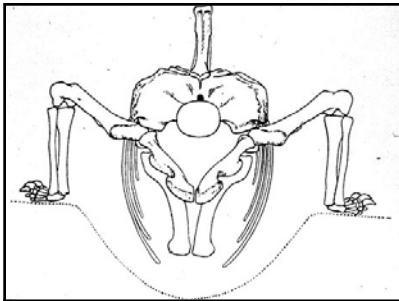
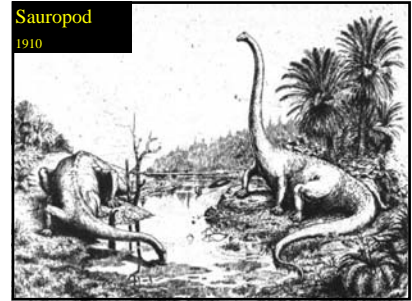


**ASSESSMENT of UNIFORM EXTINCTIONS**

- Common
- Constant Rate (Background extinctions)
- Local or Widespread "islands"—local conditions widespread across continents
- Red Queen

# MASS EXTINCTIONS

- Wide spread, striking different taxa
- Large numbers
- Relatively short time span

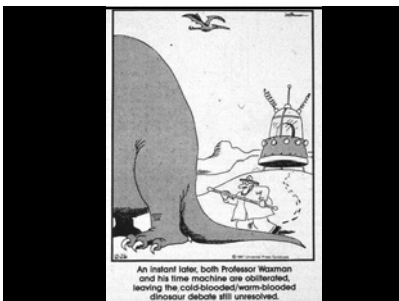


**"Hot-blood" Dinosaurs**

**Ectotherms** (≈ "cold-blooded")  
heat from environment

**Endotherms** (≈ "warm-blooded")  
heat from within, metabolic

→



An instant later, both Professor Waxman and his time machine are obliterated, leaving the cold-blooded/warm-blooded dinosaur debate still unresolved.