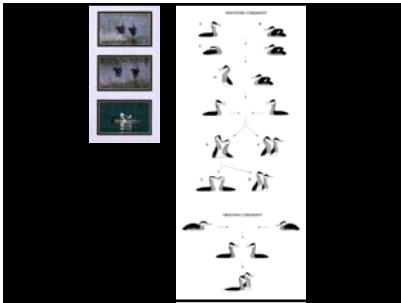




Human Evolution

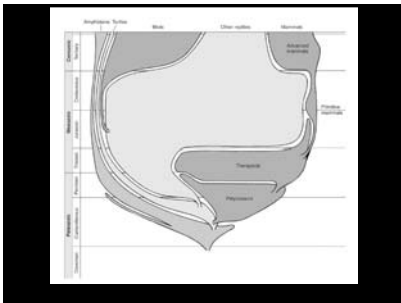
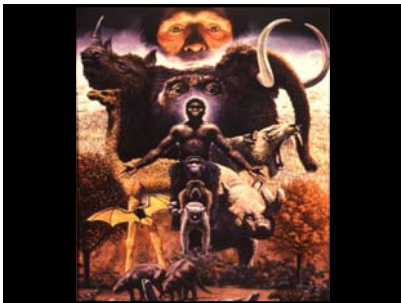
- FACT of evolution
- COURSE of evolution
- MECHANISM of evolution

Culture



Complexity

No Inevitability



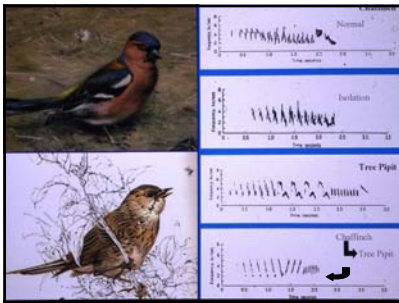
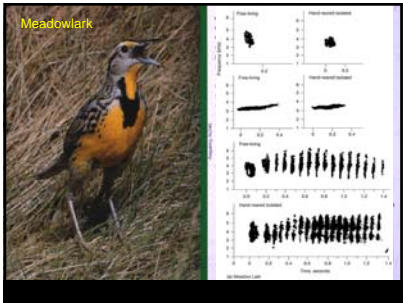
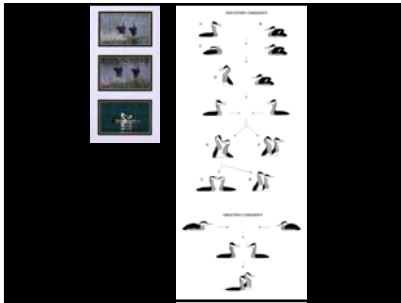


Naturalistic Fallacy



Nature – Nurture

(Instinct vs Learning)

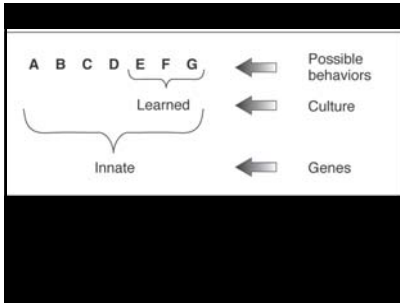


Learned Behavior--last resort
 complex
 unpredictable

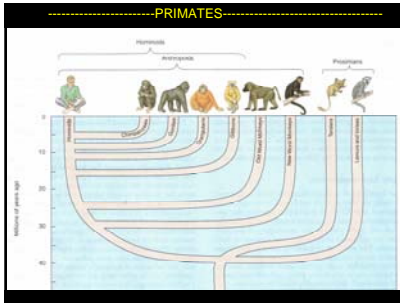
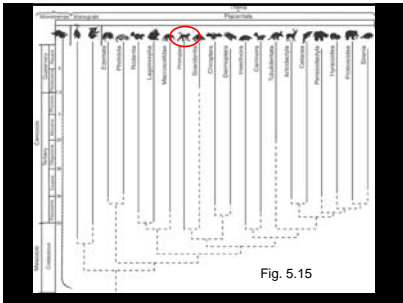
Innate Behavior
 no opportunity to learn
 must be "right" first time

Nature – Nurture

(Instinct vs Learning)

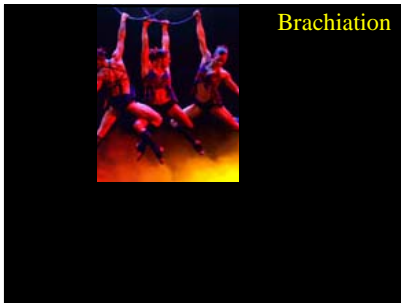
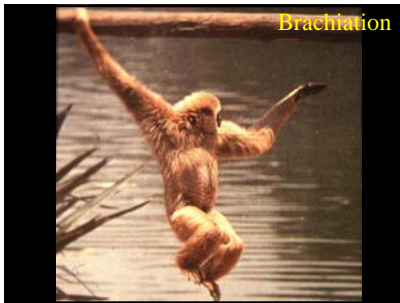


Genetic (Innate) + Learned = Behavior
 Adaptive advantage

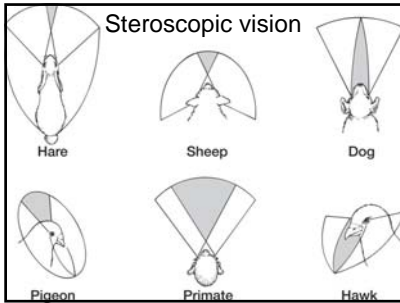


Physical Evolution

Primates
 Grasping hands



Primates
 Grasping hands
 Nails

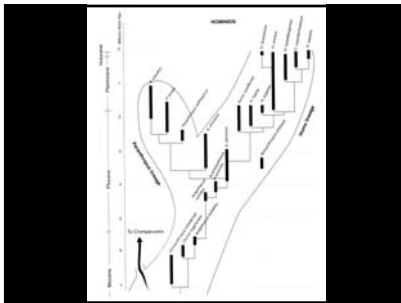
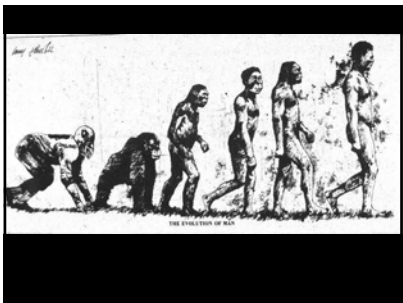
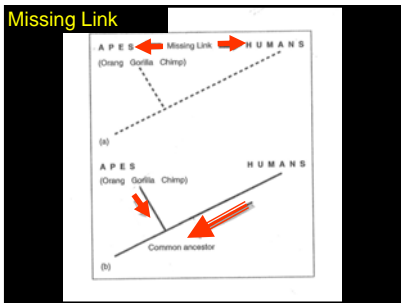
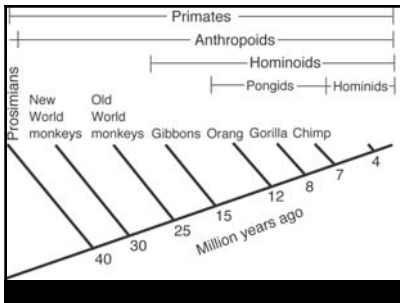


Primates

- Grasping hands
- Nails
- Stereoscopic vision

Primates

- Grasping hands
- Nails
- Stereoscopic vision
- Large brains (relative)



Primates → Humans

- Brachiation
- Long arms
- Fingers hooked
- Collar bone
- Grasping hands
- Bipedal (bipedal)
- RELATIVELY large brains



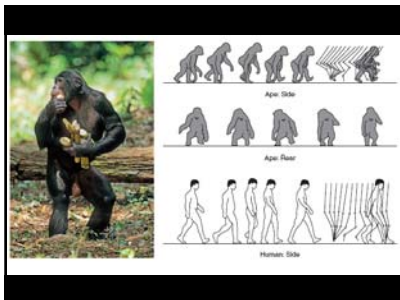
Brachiation

Primates → Humans

- Brachiation
- Long arms
- Fingers hooked
- Collar bone
- Grasping hands
- Bipeds (bipedal)
- RELATIVELY large brains

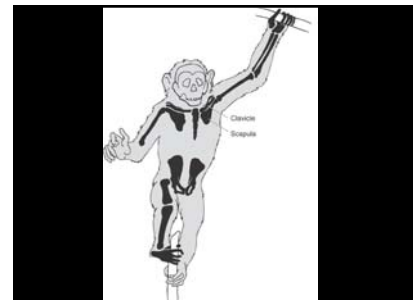


Bipedal



Primates → Humans

- Brachiation
- Long arms
- Fingers hooked
- Collar bone
- Grasping hands
- Bipeds (bipedal)
- RELATIVELY large brains



Humans

- relatively large brains
- reduced hair
- speech

