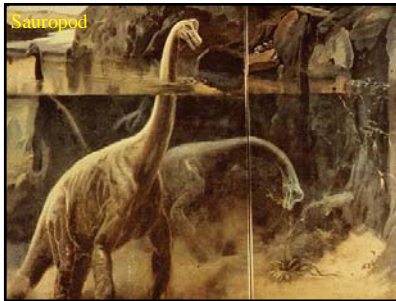
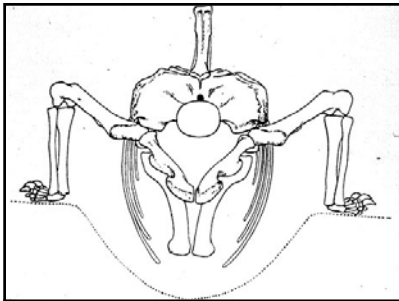
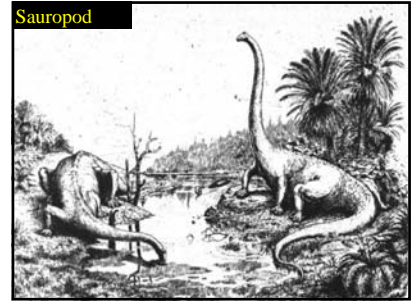


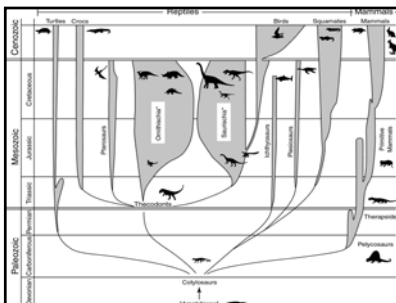
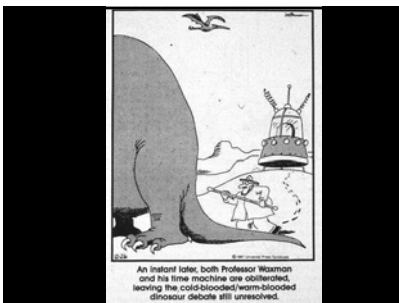
MASS EXTINCTIONS

- Wide spread, striking different taxa
- Large numbers
- Relatively short time span



"Hot-blood" Dinosaurs

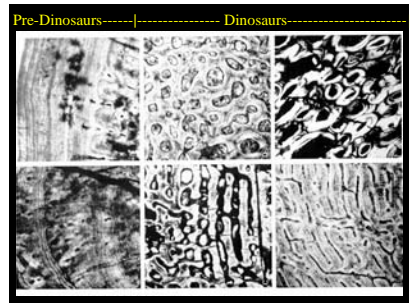
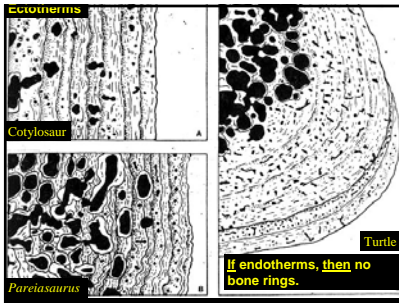
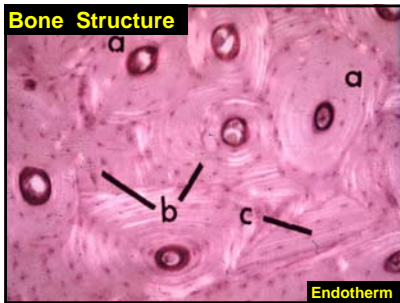
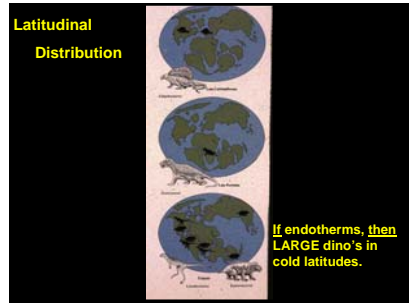
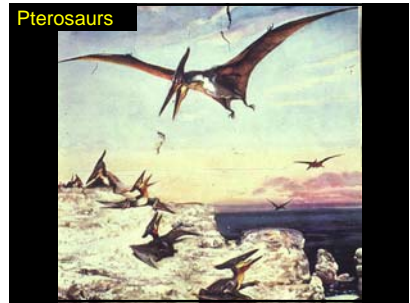
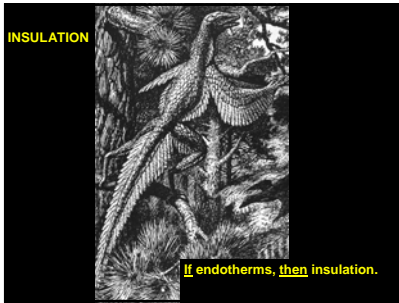
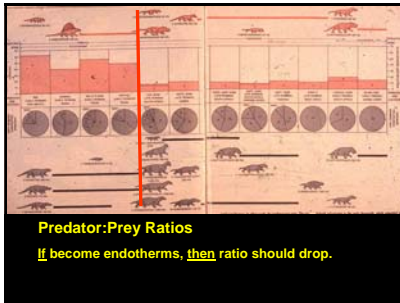
- Ectotherms** (≈ "cold-blooded")
heat from environment
- Endotherms** (≈ "warm-blooded")
heat from within, metabolic



EVIDENCE

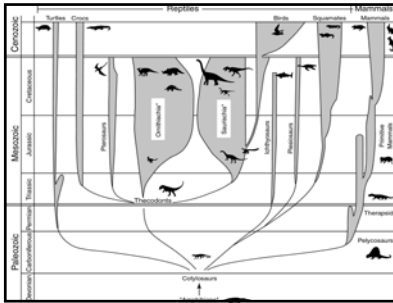
- 1) Predatory:Prey Ratios
- 2) Insulation
- 3) Latitudinal Distribution
- 4) Bone Structure

R. Bakker



CRITIQUE

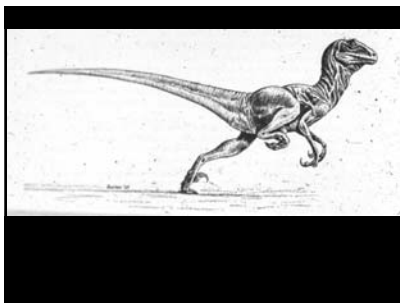
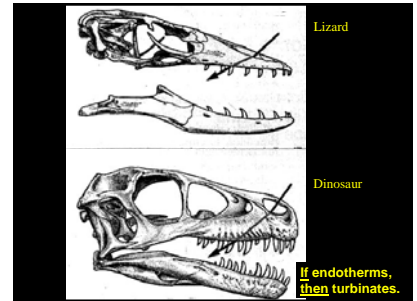
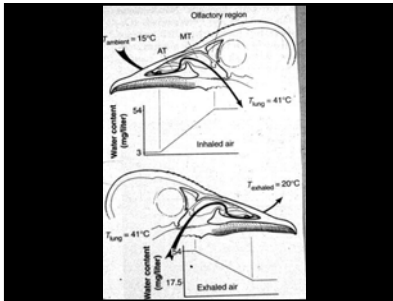
Predator:Prey Ratios-----Artifact preservation
 Insulation-----Not feathers
 Latitudinal Distribution---Migrate
 Bone structure-----Complicated

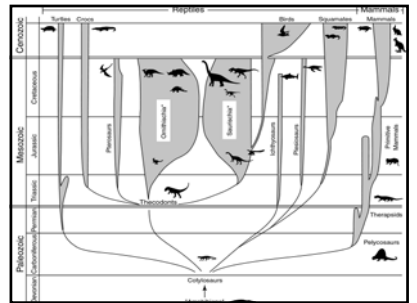
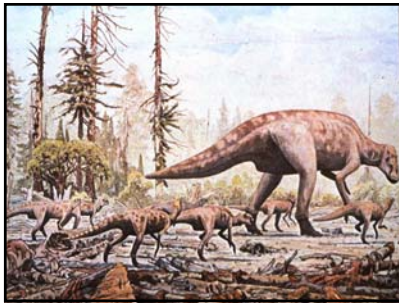
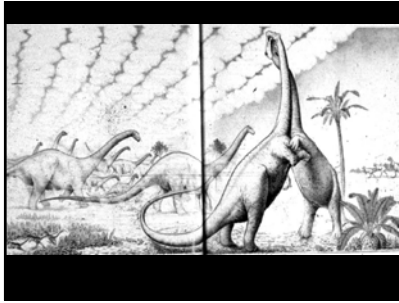
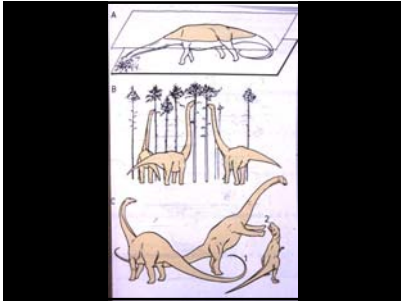


CRITIQUE

Predator:Prey Ratios-----Artifact preservation
 Insulation-----Not feathers
 Latitudinal Distribution---Migrate
 Bone structure-----Complicated

Contrary Evidence
 turbinates





Dinosaur Extinctions Causes?



Flowering plants

